

Baudisch.CP-CAM-Viewer

Product Manual

History:

Version	Date	Name	Description
0.1	07.02.2012	PB	Draft
0.1	16.02.2012	TE	Completion
0.2	15.05.2012	PO	Completion
0.3	20.01.2014	SC	Update
0.4	18.06.2014	SC	Update to Version 2.2.1

Approval latest version:

	Datum	Name	Division	KZZ	Signature
Checked	18.06.2014	M.Schmidt	DEV	SC	
Checked			PF		
Checked			VT		
Checked			user		
Checked			FE		

1. Table of Content

1.	Table of Content	2
2.	General Information	3
2.1.	Symbols	3
2.2.	Software History	3
2.3.	System requirements	3
2.4.	Scope of Supply	4
2.5.	Terms of License	5
3.	Start of operation	6
3.1.	Introduction Baudisch.CP-CAM-Viewer	6
3.2.	General	6
3.3.	Configure Baudisch.SIP-Türmodul	7
3.4.	Configure Baudisch.CP-CAM	7
3.5.	Setup of Baudisch.CP-CAM-Viewer	8
4.	Operation	9
4.1.	Starting Baudisch.CP-CAM-Viewer	9
4.2.	User interface in the systray	9
4.3.	Displaying videos	10
5.	Configuration of Baudisch.CP-CAM-Viewer	11
5.1.	Functional principle	11
5.2.	Settings Camera	12
5.3.	Settings Station	14
5.4.	Settings Video	16
5.5.	Settings System	19
5.6.	User panel	21
6.	Additional information	22
6.1.	Behavior in case of network failure	22
6.2.	Auto start application	22
6.3.	Reset settings	22
6.4.	Update	22
6.5.	Connecting other cameras	22
6.6.	Forgotten password	23
6.7.	Uninstall of Baudisch.CP-CAM-Viewer	23

2. General Information

2.1. Symbols



Warning of dangerous electrical voltage.



This symbol points out important references which must be followed to avoid injuries, as well as damages and malfunctions of the product.



This symbol points out helpful references.

2.2. Software History

Date	Version	Name	Description / Function Expansion
07.02.2012	2.1.0	PB	Release
15.05.2012	2.1.4	PO	- Addressing of camera by URL. - Separate windows for overview and picture of calling camera
17.04.2014	2.2.1	PO/PI	Various BugFixes



2.3. System requirements

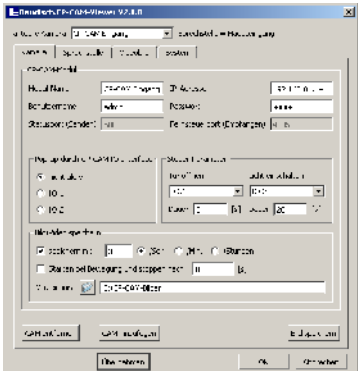
Operating system	Microsoft Windows XP, Vista, 7 (32 and 64bit)
Processor frequency	2 GHz
RAM	1 GB
Screen resolution	Depends on the shown cameras and resolutions (suggestion: 1280 x 960)
Network interface	Depends on the received camera streams (suggestion: 1 Gbit)

2.4. Scope of Supply

To use Baudisch.CP-CAM-Viewer it is necessary to own one license for each camera. The software Baudisch.CP-CAM-Viewer is delivered in a ZIP-file.

You can order Baudisch.CP- CAM-Viewer in the following configurations:

Artikel-nummer	Name Beschreibung	
36-0213	CP-CAM-Viewer base license Base version for automatic display of a CP-CAM video. For each realty and additional camera a additional license is needed.	CP-CAM-Viewer Basislizenz Basisversion zur automatischen Video-Anzeige einer CP-CAM. Pro Kundenstandort und Kamera wird eine Lizenz benötigt.
		
36-0213E	CP-CAM-Viewer additional license license for one additional camera in conjunction with a base license 36-0213.	CP-CAM-Viewer Zusatzlizenz Zusatzlizenz für jeweils eine weitere Kamera, nur in Verbindung mit einer Basislizenz 36-0213.
		
Artikel-nummer	Name Beschreibung	
36-0213S	CP-CAM-Viewer saving license Extension of the base license to use functions "print", "save" and "record" of pictures and videos..	CP-CAM-Viewer Speicherlizenz Erweiterung der Basislizenz um die Optionen "Druck", "Speichern" und "Aufnehmen" für Bild und Video.

Artikel- nummer	Name Beschreibung
	

2.5. Terms of License

By purchasing the base license the customer is allowed to install the software on any computer systems.

The computers have to be situated on the same realty.

For further realties additional licenses must be purchased.

It is possible to show the video of one camera with the base license.

To show more videos, according to the count of cameras and realties there are more licenses to purchase.

Further information about adding license codes are listed in section 5.5 Settings System.

3. Start of operation

3.1. Introduction Baudisch.CP-CAM-Viewer

The Baudisch.CP-CAM-Viewer is a computer program running at Microsoft Windows operating systems.

The software is able to show the view of a Baudisch.CP-CAM connected to a IP entry phone on the computer screen.

It supports

- 16 cameras (the software is able to handle up to 50 cameras depending on monitor resolution and processing power)
- Control of the module integrated switching relays
- Saving of pictures and videos

The software is qualified for use in conclusion with a IP hardware phone or a SIP software client.

A individual configuration matching the required specification and a comfortable usage turn the software to a flexible and valuably tool for a professional use.

In particular large facilities with lots of entrances can be supervised and managed optimal.

You have the possibility to realize different cases combining a Baudisch.CP-CAM and a Baudisch.SIP-Türmodul:

- The frequent configuration is a combination of a Baudisch.CP-CAM and a Baudisch.SIP-Türmodul
- It is possible to use the Baudisch.CP-CAM (up to 50 cameras, depending on the computer system and the number of purchased licenses) in connection with one Baudisch.SIP-Türmodul
- One camera and several Baudisch.SIP-Türmodul in connection

So you have the full flexibility designing a extensive plant.

3.2. General

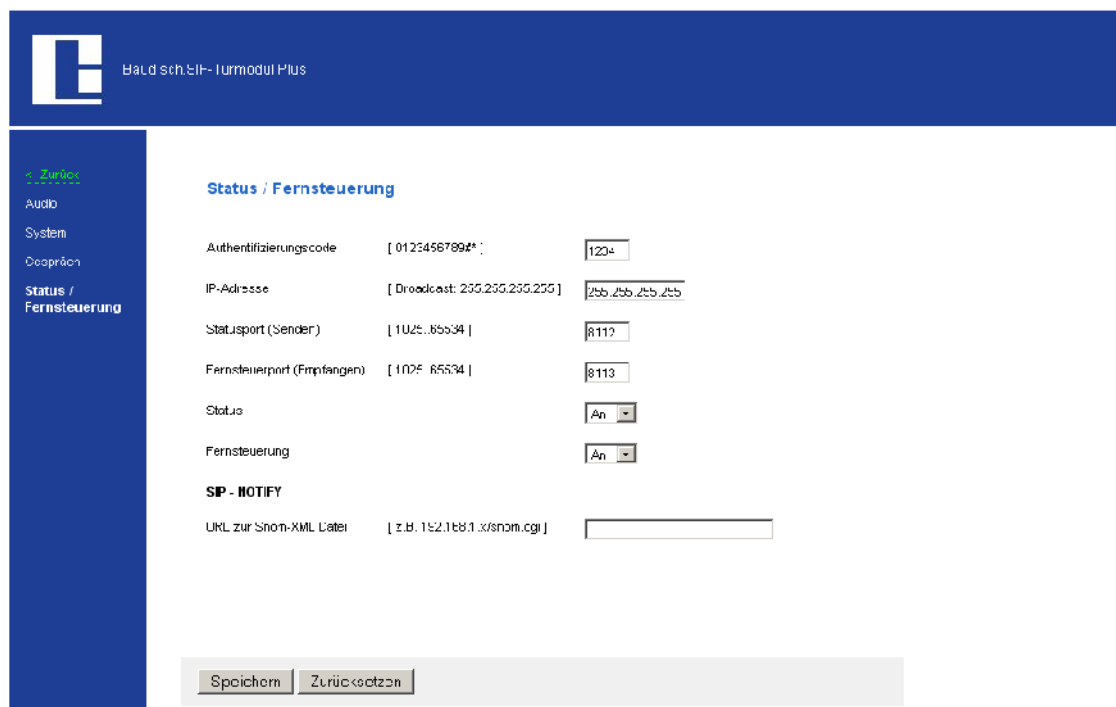
To bring the software successful into service, it is required to have connected the Baudisch.SIP-Türmodul and the Baudisch.CP-CAM properly. You will find correlative information in the manuals. In the following you will see how to configure the Baudisch.CP-CAM-Viewer.

3.3. Configure Baudisch.SIP-Türmodul

For a self-acting readout of a camera video (Auto-Pop-up), it is necessary to poll states of activity from Baudisch.SIP-Türmodul.

To control the integrated relays of Baudisch.SIP-Türmodul by Baudisch.CP-CAM (e.g. to open the door, or to switch light on), there is access on the remote port.

To use the mentioned functions with Baudisch.CP-CAM-Viewer there are changes in the Baudisch.SIP-Türmodul configuration menu needed. In the rubric "Einstellungen Hardware" further "Status / Fernsteuerung" the options "Status" and "Fernsteuerung" must be set to "An". Please save the settings by clicking the button "Speichern". Now it is possible to use the functions to open the door and switch on the light.



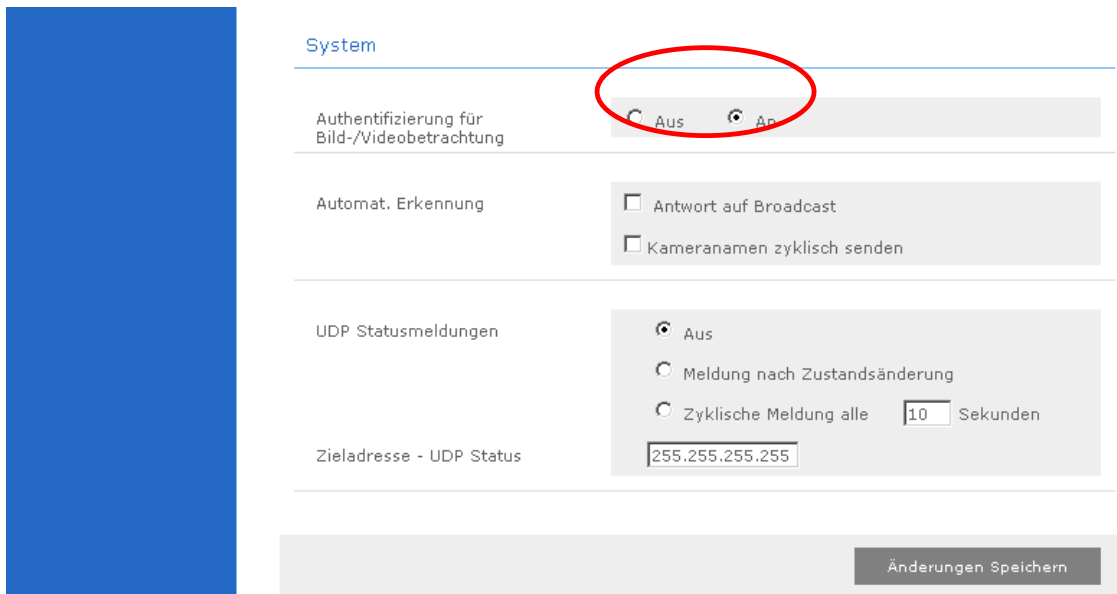
In the settings of the Baudisch.SIP-Türmodul it is needed to enter a key code at "Authentifizierungscode" (factory setting: 1234). It is necessary to use the same code at Baudisch.CP-CAM-Viewer.

The preset ports for state "Statusport" and remote "Fernsteuerport" are fixed in the software Baudisch.CP-CAM-Viewer and have to be changed if required.

3.4. Configure Baudisch.CP-CAM

To show a video stream of a Baudisch.CP-CAM on your computer screen you can either deactivate the key code "Authentifizierung für Bild-/Videobeatragung" > "Aus" or in the other case you will activate it "An" and have to enter the key code in Baudisch.CP-CAM-Viewer.

The coming screenshot shows the settings in Baudisch.CP-CAM menu "Einstellungen" > "Netzwerk" > "System":



If there is no need to set a access restriction set „Authentifizierung für Bild/Videobetrachtung“ to „Aus“. So you don't have to type a username and a password into Baudisch.CP-CAM-Viewer.

However, everyone typing the IP address into a browsers address bar can have a look at the video stream without entering a key code.

Please make sure to save the settings by clicking the button „Änderungen Speichern“.

There is the option to specify several users in the menu „Benutzerverwaltung“. It is possible to assign different authorities to the users. The default data of the administrator user is: username „admin“ and password: „1234“. For further information please check the manual of the Baudisch.CP-CAM.

3.5. Setup of Baudisch.CP-CAM-Viewer

You received the software Baudisch.CP-CAM-Viewer as a ZIP-file.

It includes the setup-file and a PDF-document with the purchased license keys. Extract the file on any folder and run the „setup.exe“.

Please follow the instructions of the setup.

4. Operation

4.1. Starting Baudisch.CP-CAM-Viewer

If you didn't changed the folder while setup, you will find the software in c:\program files\Baudisch.CP-CAM-Viewer. There is also a new item in your Windows start menu.

After executing the software a Icon appears in the tasktray menu next to the clock in your task bar.



How to start Baudisch.CP-CAM-Viewer automatically after starting Windows is described in chapter 6.2 Auto start application.

4.2. User interface in the systray

The configuration menu will open after a right-click on the icon.



Minimize

The displayed videos are hidden. If the option Auto Pop-up all is active and a call will come in the Video will be shown again.

Maximize

You will see the videos in full screen size.

Restore

The videos will be shown in the configured size.

Language

Here you are able to change the language (German/English).

Settings

By clicking the entry you will open the configuration menu.

End

This will close the Baudisch.CP-CAM-Viewer.

4.3. Displaying videos

Before you can see streams on your computer screen there are several settings to do. If you are running Baudisch.CP-CAM-Viewer for the first time, you have to do the settings like described in chapter 5 Configuration of Baudisch.CP-CAM-Viewer.

A right-click on the video will enlarge it to full screen size. Clicking once again will reduce the dimensions to their originally size.

Special case – several Baudisch.CP-CAM, one Baudisch.SIP-Türmodul

If there are a few Baudisch.CP-CAMs assigned to one Baudisch.SIP-Türmodul (e.g. to show areas that are difficult to observe), the name of the camera or where the camera is situated will be displayed.

Special case – one Baudisch.CP-CAM, several Baudisch.SIP-Türmoduls

In case of several Baudisch.SIP-Türmoduls are assigned to one camera, this Baudisch.CP-CAM must be added several times with the same IP address. We suggest to vary the name of the camera to identify which Baudisch.SIP-Türmodul is calling.

5. Configuration of Baudisch.CP-CAM-Viewer



Settings done in this menu have to be saved by clicking the “Apply” or “OK” button.

If you click on the button “Apply” the menu will still be shown, a click on “OK” saves the settings and closes the menu. If configurations won’t be changed, please restart the application.

5.1. Functional principle

Base of operations for the configuration data entity is based on a camera definition.

In the following figure you can see how to switch between camera definitions and how to create or delete cameras.

By selecting a camera in the dropdown menu **actual camera** the settings of this camera are enabled for change.

In the register **Camera** you can modify the settings of the currently selected camera.

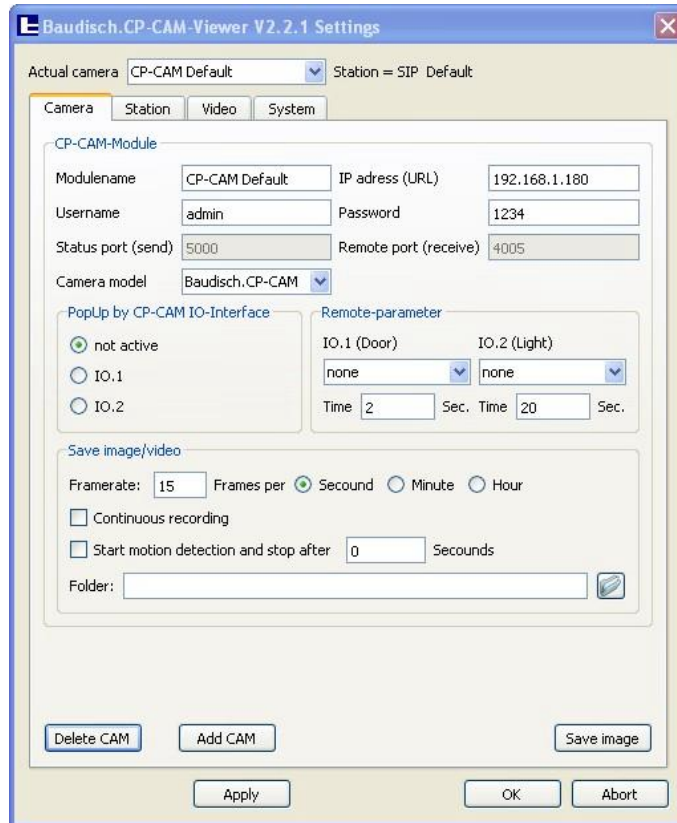
You are able to change the settings for the assigned Baudisch.SIP-Türmodul in the register **Station**.

The registers **Video** and **System** show general settings, that do not apply to one camera in special.

By a click on **Delete CAM** the currently selected camera will be deleted.

Add CAM creates a new camera. A click on **Apply** will save the settings.

5.2. Settings Camera



Modulename

Here you have the possibility to assign a name for the camera. In ideal way you choose the name of the position of the camera. So it is easy to identify the shown video if you show more than one video.

IP address

Please enter the IP address of the Baudisch.CP-CAM.

Username / Password

Enter the user name (exact syntax) and the password of one user defined in Baudisch.SIP-Türmodul.

The factory settings of the administrator account are: username: "admin", password: "1234".

You don't have to fill out the form, if there is in Baudisch.SIP-Türmodul menu "Einstellungen > "Netzwerk" > "System" the option "Authentifizierung für Bild/Videobetrachtung" defined to "Aus" (deactivated).

Status port (send)



Attention: This concerns the settings in Baudisch.CP-CAM

On this Port the state of the camera is assigned. At this time, it is not possible to change the settings. The port is fixed in the Baudisch.CP-CAM by factory and has to be set to this value in case of variation.

Remote port (receive)



Attention: This concerns the settings in Baudisch.CP-CAM

Via this port the remote functionality (switching relays) communicate. At the moment it is not possible to change the port. The port is fixed in the Baudisch.CP-CAM by factory and has to be set to this value in case of variation.

Camera model

Baudisch.CP-CAM-Viewer supports in addition to Baudisch.CP-CAM further cameras. You'll find a list in 6.5 Connecting other cameras. Please select the connected camera in this menu

Pop-up by CP-CAM IO-Interface

Any Baudisch.SIP-Türmodul comes with two inputs. In this menu one of those inputs can be selected. If there is a detected signal on this input, in Baudisch.CP-CAM-Viewer the selected video pops up.

Remote-parameter

Any Baudisch.SIP-Türmodul comes with two relays. It's possible to control a release buzzer or electric lighting with the application by a click on the appropriate button in the user panel (chapter 5.6 User panel). In this dialogue you assign the functions to the relay. In addition you define the duration of switching.

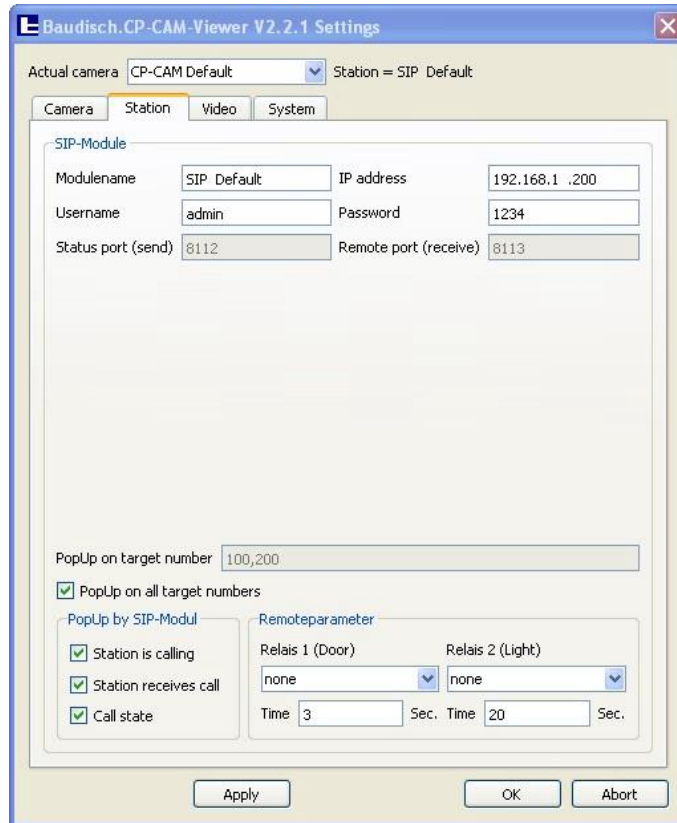
Save image/video

Before using this feature, you have to purchase a license key. If you have not already entered it to the system, please read **Fehler! Verweisquelle konnte nicht gefunden werden. Fehler! Verweisquelle konnte nicht gefunden werden.** to do so.

This figure of merit must first be activated ("Activate auto-save images/video" in register "System"). Afterwards it is feasible to save a defined quantity of pictures in a period in a folder.

The setting "Start motion detection and stop after" will start if one of the inputs of the Baudisch.CP-CAM is activated and stop recording after the time typed in the field. It's best to trigger the input with a motion detector.

5.3. Settings Station



Modulename

Set a name of the Baudisch.SIP-Türmodul. It is recommended to choose the name of the position of the station for a easy identification.

IP address

Please type in the IP address of the Baudisch.SIP-Türmodul.

Username / Password

There is only one user in the settings of Baudisch.SIP-Türmodul. It is named "admin". In the field "password" you have to enter the number, which is defined in Baudisch.SIP-Türmodul (chapter 3.3 Configure Baudisch.SIP-Türmodul). The factory setting is "1234".

Status port (send)

Via this port the state of activity of the Baudisch.SIP-Türmodul communicates and is necessary for the pop up of the video when a incoming call or a session establishment occurs. At this time, it is not possible to change the settings. The port is fixed in the Baudisch.SIP-Türmodul by factory and has to be set to this value in case of variation.

Remote port (receive)

The remote functions (switching relays) are transmitted on this port. At this time, it is not possible to change the settings. The port is fixed in the Baudisch.SIP-Türmodul by factory and has to be set to this value in case of variation.

Pop-up on Target number

Enter the call number of these stations you'd like to use the automatically video pop-up function. For example bell button 1 belongs to call number 100 and bell button 2 belongs to call number 200 and the video should only pop up on pushing bell button 1, so you have to enter 100. If you'd like to display the video of several call numbers, please separate it with a comma but no space character. In case of the video is reported to pop up with all call numbers, activate the checkbox Pop-up on all target numbers.

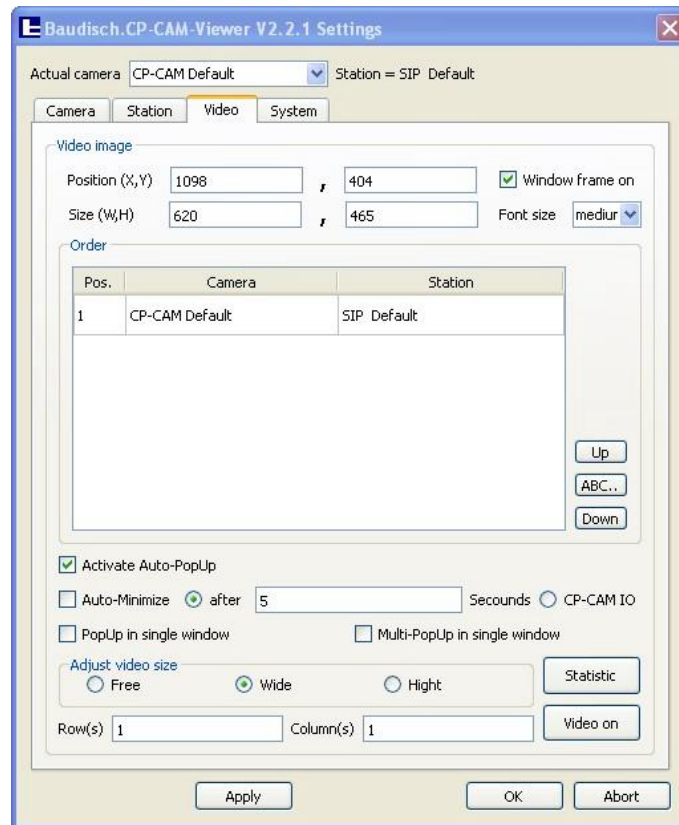
Pop-up by SIP-Module

Here you can select between showing the video automatically at a outgoing call, a incoming call or during a call. It is needed to activate "Auto Pop-up all" in register "Video".

Remote-parameter

Any Baudisch.SIP-Türmodul comes with two relays. It's possible to control a release buzzer or electric lighting with the application by a click on the appropriate button in the user panel (chapter 5.6 User panel). In this dialogue you assign the functions to the relay. In addition you define the duration of switching.

5.4. Settings Video



Position (X,Y)

Put in the position of the video on your screen. The data depend on the distance in pixel based on the upper left corner of the screen to the upper left corner of the video.

Size (W,H)

The value in this input form sets the size of the displayed video. If you use only one camera it is recommended to use the camera solution (640 x 480, 320 x 240, 160 x 120). In case of several videos have to be shown on the screen, you must enter the size of the video, that depends on the camera resolution and the declaration of columns and rows.

Window frame on

By activating this checkbox, the video will be displayed in one dialogue. Now it's possible to move or to scale the window. This function can also be used to set position and size very comfortable. The values made in register "Video" get customized automatically.

Font size

The in menu "Camera" given name of the camera is shown in the video. If you use several cameras, so you are able to identify which video belongs to which camera. By choosing "small", "normal" or "large" you can customize the size of the font.

Order

Here you can set the order of the videos in the window. Position 1 is in the upper left corner. The videos are arranged from the left to the right and from the top to bottom. You can change the position by a click on the entry. By clicking the buttons "up" and "down" you can change the order. The button "ABC..." sorts the cameras by name in alphabetical order.

Activate Auto-Pop-up

It's needed to activate this function to show the video in case of a call. So the video appears when a call is active and otherwise it is not visible. To show the video permanently, the function must not be active.

Auto minimize

If you'd like to minimize the video automatically, activate the option.

You can define a specific period in seconds to close the video window or you select CAM IO to show or disappear the window with every CAM IO status change.

Pop-up in single window

This settings shows the video in a single window. If a second call with a second camera occurs, this picture isn't shown.

Multi-PopUp in single window

This setting shows the video in a tab of a single window. If a second call with a second camera occurs, this picture is showed in a second tab of the window.

Adjust video size

How to define the size of the is defined here. By selecting the option "Free" the proportion of the video is not fixed and the video gets adjusted to the window. The video may be distorted. By choosing "Wide" or "Height" the accordant side will be the reference for the aspect ratio.

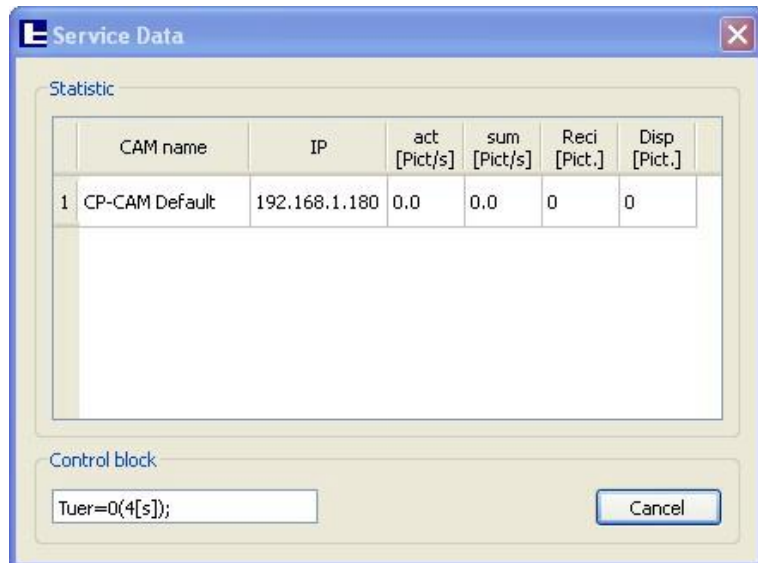
Row(s) / Column(s)

Here you can define the position of each video on your screen if you use several videos. The size of the composition is defined at "Size (W,H)".

Video on

This button shows the overview of all videos.

Statistic



Service Data

Statistic

	CAM name	IP	act [Pict/s]	sum [Pict/s]	Rec [Pict.]	Disp [Pict.]
1	CP-CAM Default	192.168.1.180	0.0	0.0	0	0

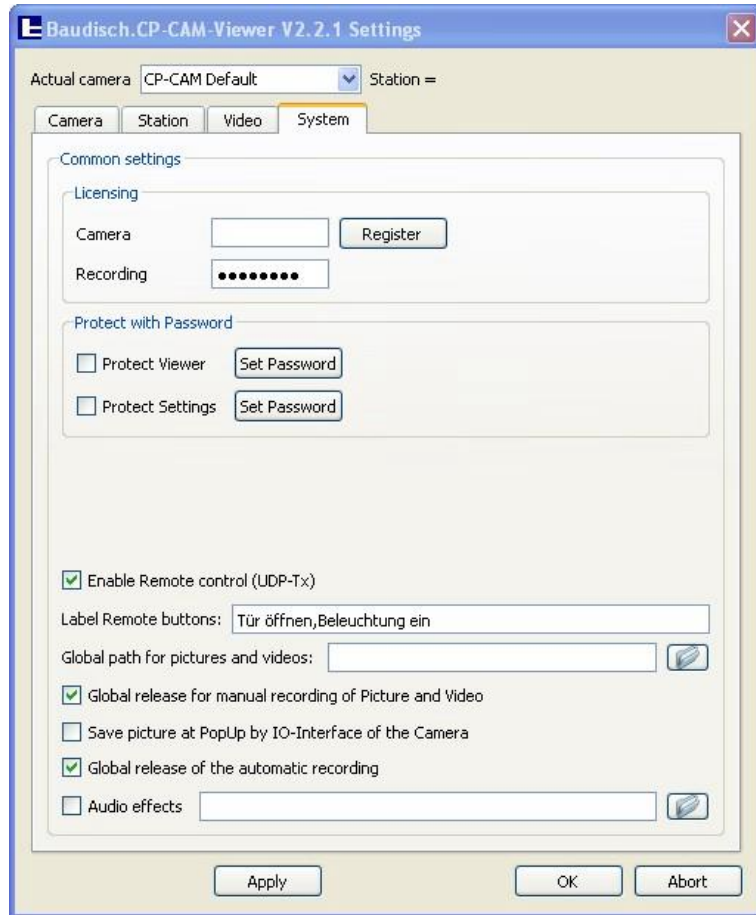
Control block

Tuer=0(4[s]);

Cancel

CAM Name	Assigned camera name
IP	IP address of the Baudisch.CP-CAM
act [Bild/s]	Picture rate of the camera stream
sum [Bild/s]	Average picture rate since start of the software
Red [Bild]	Number of received pictures
Disp [Bild]	Shows the number of converted pictures

5.5. Settings System



Licensing

The field "Camera" is used to enter the purchased license codes. The software Baudisch.CP-CAM-Viewer comes with a base license for one camera. For each additional camera a additional license code is needed. Until the new camera is not licensed, a red bar is shown on the video. To enter a license, please delete the text in the form (if present). Enter the license code (consider upper and lower case) and click on the button "license" and afterwards on the button "Apply". Another camera is now activated.

The field Recording is used to enter the purchased recording license code. Enter the license code (consider upper and lower case) and click on the button "Apply". This will release the checkboxes to activate the recording functions.

Protect with Password

There is the possibility to protect the videos and the settings of the software. So the viewing of videos or changing the settings by unauthorized persons is impossible. When you set the checkbox, the protection becomes active. By clicking "Set Password" you can set a new password. The factory default password is "1234". Please mind upper and lower case.

Enable Remote control

With Baudisch.CP-CAM-Viewer it is possible to send remote commands via UDP. So you are able to control the relays, included in the Baudisch.SIP-Türmodul. Activate the checkbox if you'd like to use remote functions like switching light or activate the release buzzer.

Label Remote buttons

To define the inscription of the control buttons in the user panel (chapter 5.6 Table of Content) type in the text here. Please separate the inscription with a comma.

Global Path for pictures and videos

Enter the global default path to store the pictures and videos.

Global release for manual recording of Picture and Video*

For manually taken videos in the user panel or manually taken pictures with the button in the camera tab you have to activate the checkbox.

Save picture at PopUp by IO-Interface of the Camera*

If you desire to save a picture every time a CAM I/O occurs you have to activate the checkbox.

Global release of the automatic recording *

To activate the function of automatic recording in the camera tab you have to activate the checkbox.

Audio effects

To signalize a call on a door with a audio signal, please activate this checkbox and select a sound file (*.wav).

* This feature is not active in base version. You have to purchase a license code.

5.6. User panel

With a click with the left mouse button you can open the user panel with additional control functions. If you click once again, the user panel will close again.



Activate video and open user panel

By a left-click on the video a user panel appears.

Here are additional functions to control the assigned Baudisch.SIP-Türmodul.

You have to click twice if you display several videos: Once to select the camera (marked with a angle bracket at the beginning of the camera name) and twice to open the user panel.

Tür öffnen (open door)

With this button the relay of the release buzzer gets operated. First you have to configure the settings (menu SIP, see "Configure Baudisch.SIP-Türmodul").

Beleuchtung ein (light on)

With this button the relay of the electrical light gets operated. First you have to configure the settings (menu SIP, see "Configure Baudisch.SIP-Türmodul").

Save video *

With this button you can create a video of the actual shown camera. The folder where the file will be saved is to be defined in menu "System" (chapter 5.5 Settings System).

Full screen

Switch between full screen view of one video and displaying all videos simultaneously.

* This feature is not active in base version. You have to purchase a license code. There are more information in chapter 5.2 and **Fehler! Verweisquelle konnte nicht gefunden werden..**

6. Additional information

6.1. Behavior in case of network failure

In opposition to watching videos in browsers, Baudisch.CP-CAM-Viewer has the possibility to reconnect automatically after a disconnection.

In case of connection loss a camera symbol with a yellow thunderbolt changes secondly with the last captured picture.

6.2. Auto start application

To start Baudisch.CP-CAM-Viewer each time you start Windows you have to create a shortcut in your autorun folder. Please check up Microsoft Windows help how to do so.

6.3. Reset settings

In case of unexpected errors occur, it will be necessary to reset the settings to its factory default values.

To do so, delete the file "Baudisch.CP-CAM-Viewer.ini". The file will be generated once again at the next start of the application.

You'll find the file in your installation directory (default: C:\Program Files\Baudisch.CP-CAM-Viewer)

In case of hidden parameters must be deleted please contact support@baudisch.de

6.4. Update

In case of a update is required, first you have to reset the password protection by setting to default "1234" like described in 5.5 Settings System.

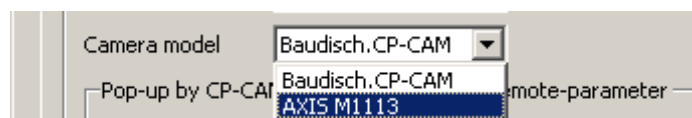
Afterwards uninstall Baudisch.CP-CAM-Viewer, see 6.7 Uninstall of Baudisch.CP-CAM-Viewer.

Now the installation of the new software version can be done. Please do so like described in 3.5 Setup of Baudisch.CP-CAM-Viewer.

6.5. Connecting other cameras

In addition to the Baudisch.CP-CAM, the application supports the following cameras so far:

- AXIS M1113



6.6. Forgotten password

If you have forgotten your password, please contact support@stentofonbaudisch.com

6.7. Uninstall of Baudisch.CP-CAM-Viewer

To uninstall the application, run "unins000.exe". You'll find it in the folder of your installation (standard: C:\Program Files\Baudisch.CP-CAM-Viewer).

The folder "Baudisch.CP-CAM-Viewer" will be still present and includes the files „Baudisch_CP_CAM_Viewer.ini“ and „Baudisch_CP_CAM_Viewer.log“.

Please delete these files manually, if you don't like to use the software any longer. In case of a Update you should keep the files to keep your settings.